

CLEANING/DESCALE

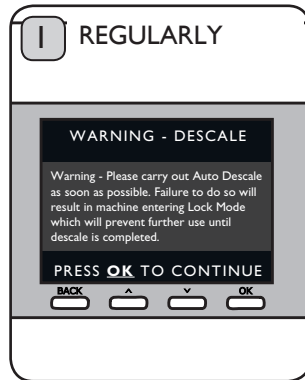
Your CaféPro has a Descale Counter that will warn the user that the machine requires descaling after 1500 dispenses. If the machine is not descaled after a further 500 capsules are extracted, the machine will lock all product function until a descale cycle has been completed. This is to prevent permanent damage.

Note:

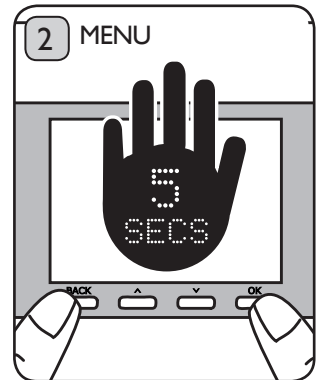
You will need:

- 2 x 2 litre (L) containers.
- Note: 2 litres minimum volume, containers can be larger.

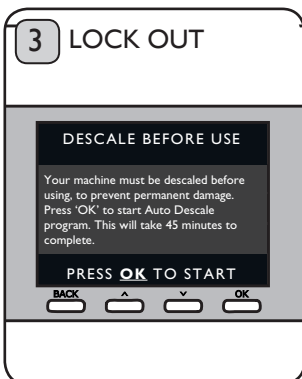
Always use a Dualit recommended Descaler and Water Softener in your machine. Please see www.dualit.com/accessories for more information.



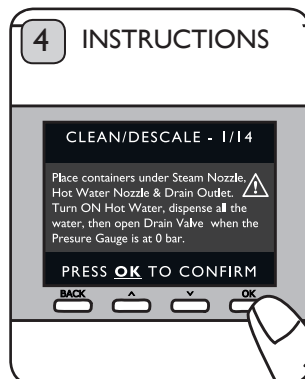
After 1500 Dosing extractions, your CaféPro will warn you to descale. A counter will show in top right hand corner. Go to menu to run Clean/Descalé program.



Hold the 'OK' and 'BACK' buttons to access the menu. Select 'Machine Clean/Descalé' and follow the on display instructions to begin Clean/Descalé program.



If you do not descale your machine after 1500 uses, you can extract a further 500 times before the machine will lock out. At this point, follow the on screen instructions to descale your machine.

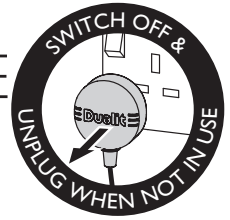


The display will show step by step instructions on how to descale your CaféPro. **Warning: Do not open Drain Valve until Steam Pressure Gauge is down to 0.**



Always make sure you descale in a well ventilated room and avoid contact with the descaling solution. Caution: Steam released during Cleaning/Descalé may be harmful.

CLEANING/DESCALE CYCLE



Dualit recommends descaling at least once a month or every 1500 uses, whichever comes sooner, to prevent limescale build up in the machine.

IMPORTANT NOTICE: Product failure due to limescale build up is not covered by guarantee. The Cleaning/Descal cycle is a 14 - step process which will take approximately 45 minutes to complete.

Drain System

1. Place 2L Containers under Steam Nozzle, Hot Water Nozzle and Drain Outlet. OPEN Hot Water and Steam Wand, then dispense all the water **CAUTION: HOT WATER AND STEAM**. Press 'OK' to confirm only when no more water is dispensed.
 - A guide will appear on screen indicating the main areas of your machine which will need cleaning. Press 'OK' to continue.
2. Check the Pressure Gauge is at 0 bar. Then slowly open the Drain Valve **CAUTION: HOT WATER AND STEAM**. Leave Hot Water and Steam Valves open until step 14. Close Drain Valve. Press 'OK' to confirm.

Descal

3. Empty Water Tank then fill to MAX with cleaning/descal solution (see manufacturer's guidelines for dilution or www.dualit.com). Place 2L Containers under the Group Heads 1 & 2. Ensure Drip Trays are in place. Press 'OK' to confirm.
4. Machine Cleaning/Descal in progress. This will take 5 minutes. Note: Hot water will dispense intermittently from Group Heads 1 & 2. **CAUTION: HOT WATER**.
5. Pour all liquid from Containers back into Water Tank, then top up to MAX level with fresh water. Place the empty 2L Containers back under the Steam and Hot Water Nozzles. Water Tank must be at MAX to continue. Press 'OK' to confirm.
6. Machine Cleaning/Descal in progress. This will take 5 minutes. Note: Hot water will dispense from Steam and Hot Water Nozzles intermittently. **CAUTION: HOT WATER**.

Rinse

7. Dispose of all descale solution from Drip Trays, Water Tank and Containers. Fill Water Tank with fresh water up to MAX level. Place 2L Containers under Group Heads 1 & 2. **CAUTION: HOT WATER** Press 'OK' to confirm.
8. Cleaning/Descal in progress, please wait. This will take 5 minutes. **CAUTION: HOT WATER** Note: Hot water will dispense intermittently from Group Heads 1 & 2.
9. Machine filling Boiler, please wait. This will take 5 minutes. **CAUTION: HOT WATER**
10. Empty the 2L Containers. Check the Pressure Gauge is at 0 bar, place container under Drain Valve then slowly open the Drain Valve **CAUTION: HOT WATER AND STEAM**. Once the water has dispensed, close the Drain Valve. Press 'OK' to Confirm.
11. Fill Water Tank to MAX level with fresh water. Place 2L Containers under the Steam and Hot Water Nozzles. Ensure Drip Trays are in place. Press 'OK' to confirm.
12. Cleaning/Descal in progress, please wait. This will take 5 minutes. Hot water will dispense intermittently from Hot Water and Steam Nozzles. **CAUTION: HOT WATER** Press 'OK' to confirm.
13. Check the Pressure Gauge is at 0 bar. Then slowly open the Drain Valve **CAUTION: HOT WATER AND STEAM**. Once the water has dispensed, close the Drain Valve. Press 'OK' to confirm.
14. Close Steam and Hot Water Valves. Dispose of remaining liquid from the Drip Tray and Containers. Press 'OK' to confirm once complete. Refill Water Tank with fresh water.
 - Cleaning/Descal Cycle is complete. Press 'BACK' to return to the Main Display.