

### IMPORTANT SAFETY PRECAUTIONS

## READ ALL INSTRUCTIONS

**BEFORE USING THE DUALIT KNOCK BOX.**

**KEEP THESE INSTRUCTIONS FOR FUTURE REFERENCE.**

- This appliance is not designed for commercial or industrial use; it is for domestic use.
- Do not place the appliance on a polished wood surface or any porous surface, it could damage the surface.
- Warning: Be careful to keep fingers out of the way when using product, to avoid injury.

## SAVE THESE INSTRUCTIONS

**BEFORE FIRST USE**

- Read this instruction manual before you start using the coffee machine. It includes important safety information and will ensure you get the most out of your Dualit product.
- Keep this manual and your proof of purchase in a safe place.

*All illustrations are for representation only, your model may vary from illustrations shown.*

*In the interest of improving products, Dualit Ltd. reserves the right to change the product specification without prior notice.*

DON'T FORGET  
TO REGISTER  
YOUR PRODUCT

[WWW.DUALIT.COM/REGISTER](http://WWW.DUALIT.COM/REGISTER)

OR BY POST

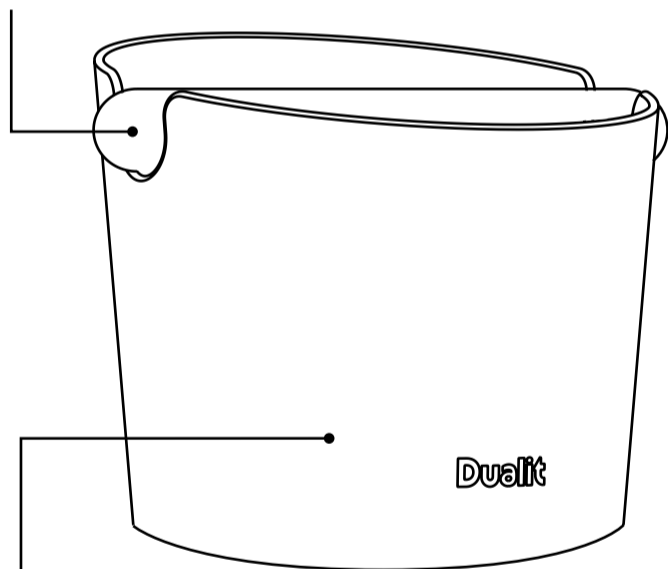


Register  
my appliance

## SET-UP

Ensure that the Knock Box is assembled with the Bang Bar in its positioning slots. Take care to ensure there is an even amount of the Bang Bar protruding from each side.

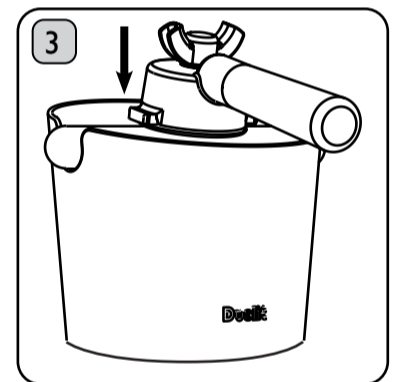
BANG BAR



KNOCK BOX

## USING YOUR KNOCK BOX

1. Remove the Portafilter from your machine. WARNING: Portafilter and coffee grounds may be hot. Allow time to cool before removing.
2. Turn the Portafilter upside down over the Knock Box.
3. Tap the Portafilter against the Bang Bar until the coffee puck comes out. Ensure the Basket makes contact with the Bang Bar and not the Handle, as this may dislodge the basket from the Portafilter.
4. With a cloth, wipe the inside of the basket to remove any remaining coffee grounds.
5. Empty and clean the Knock Box at least once a day or when full. Coffee grounds can be added to home compost or placed in a food waste bin.



## CLEANING

- To clean, first empty coffee grounds and place in food waste bin or add to home compost.
- The Knock Box is dishwasher safe. Remove the Bang Bar by lifting from the Knock Box and place both items on the upper shelf of your dishwasher. Alternatively, hand wash in warm soapy water and dry thoroughly before storing.

## TROUBLESHOOTING

POSSIBLE CAUSE(S)	SOLUTION(S)
<b>MY PUCK IS SLOPPY/WET AND LEAVES RESIDUE WHEN I KNOCK IT OUT.</b>	
There is too little coffee in the Portafilter Basket.	Use more coffee.
Coffee grind is too coarse.	Use a finer grind of coffee.
<b>MY PUCK IS VERY DRY AND HARD TO KNOCK OUT OF THE PORTAFILTER BASKET.</b>	
There is too much coffee in the Portafilter Basket.	Use less coffee.
Coffee grind is too fine.	Use a coarser grind of coffee.
Coffee has been tamped too hard.	Use less pressure when tamping coffee or use a calibrated tamper such as the Dualit Tamper.
<b>MY BASKET FALLS OUT OF THE PORTAFILTER WHEN I HIT THE BANG BAR.</b>	
The Portafilter Handle is hitting the Bang Bar.	Make sure you hit the Bang Bar with the Basket and not the Handle.
The Basket is loose in the Portafilter.	If your Portafilter has a retaining mechanism, make sure the Basket is secure and adjusted correctly.